

Date: 20.03.2013

Ref: D. Agier

Department: R&amp;D

## Abstract

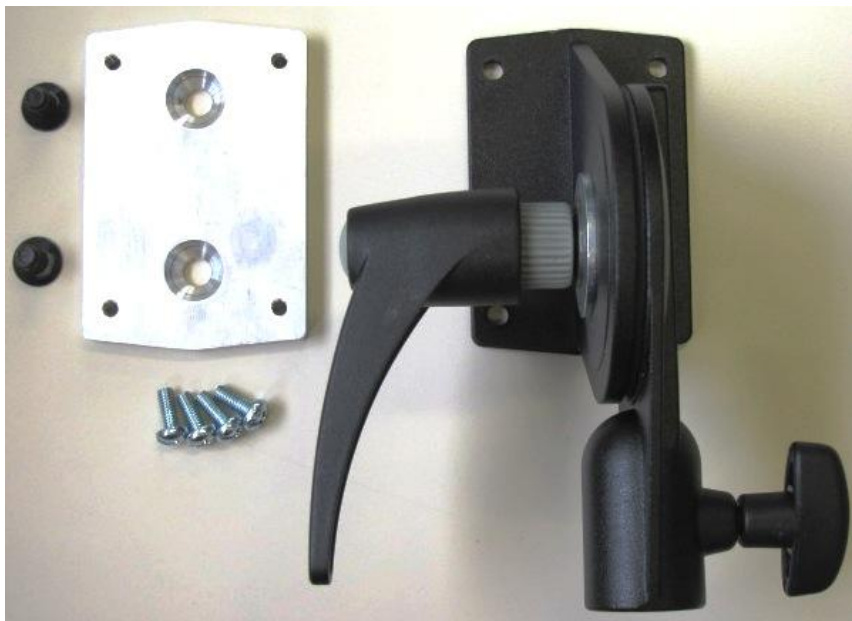
By fixing heavy units like the Style 1200RX on the bayonet fixing of the armature, the soft box sinks even the handle is well tightened.

The upgrade kit will improve significantly the clamping of the bracket even a low tightening force is applied on the handle.

The bracket is completely replaced with the same one mounted in the big Elinchrom soft boxes.

You need to disassemble the bracket and to mount the one delivered in the kit by means of the adapter plate.

## Content of the kit, code Nr. 250.310

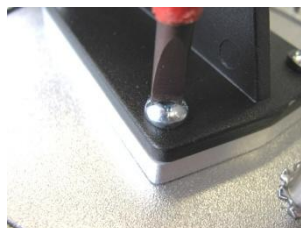


## Tools needed

- Metric 4 and metric 5 tools for unscrewing / screwing hexagonal intern screws



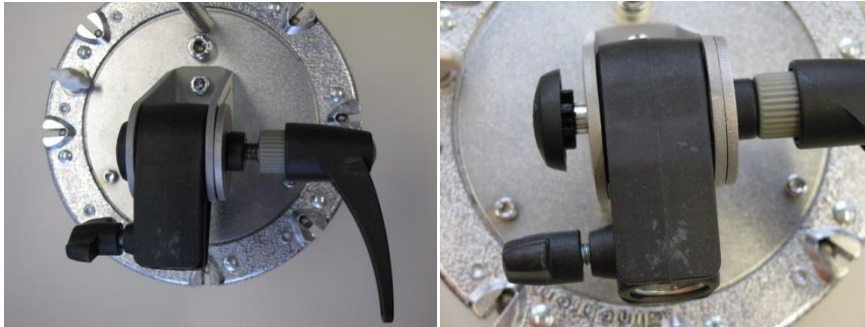
- Philips screwdriver or straight screwdriver Nr. 3



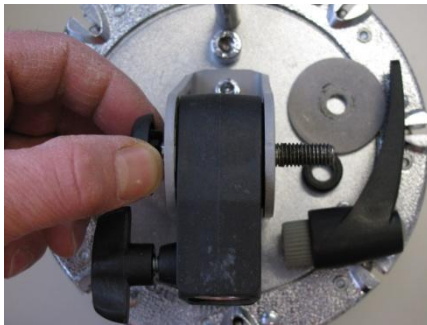
## Removing the whole tilt bracket

Because there is one screw not easy to dismount with a standard Nr. 5 key tool, please follow the step per step instruction below

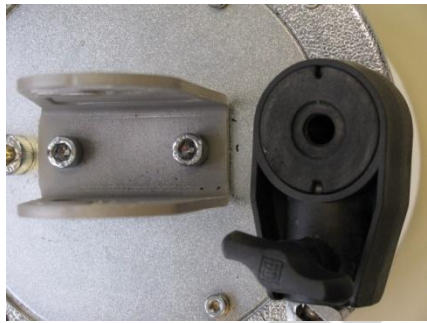
1. Unscrew the handle about 1cm, and rap on the handle to disengage the teeth of the bold head from the grey "U shape" part. Fully unscrew the handle and remove the metallic and plastic washers



2. Pull on the head of the M8 bolt to fully disassemble it



3. Fully remove the black stand fixing part of the bracket



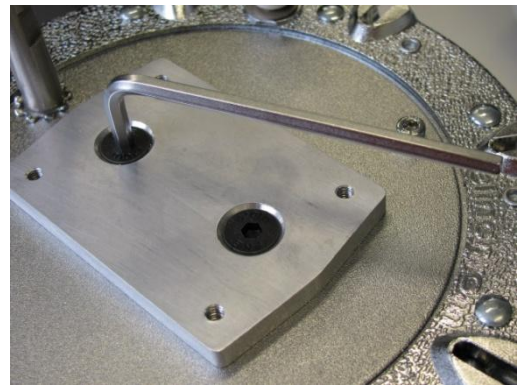
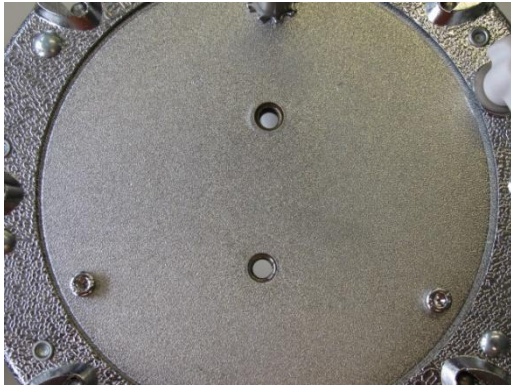
4. Disassemble the grey "U shape" part fixed on the rear disk by unscrewing the 2 hexagon intern screws, use the hexagon key Nr. 5



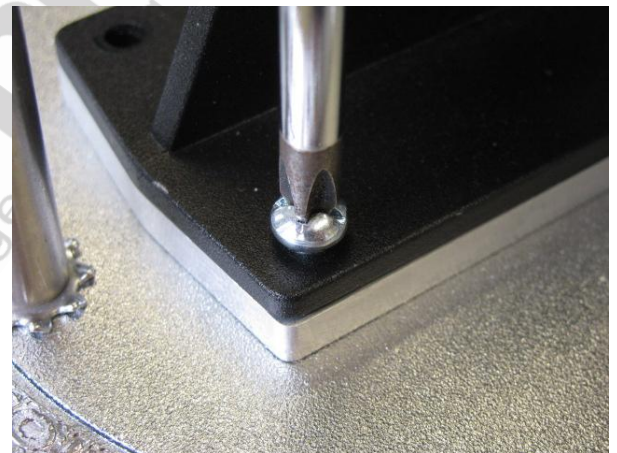
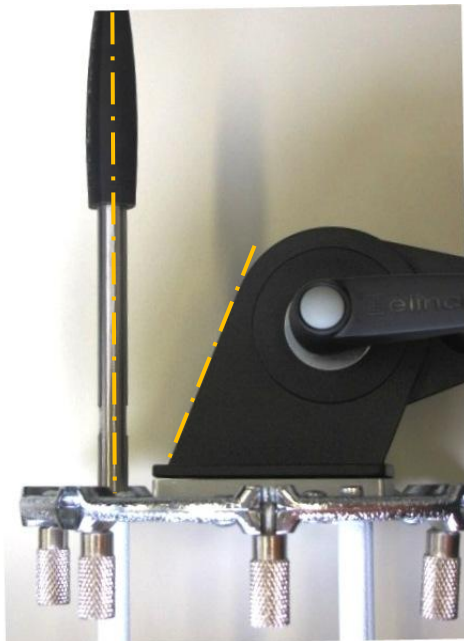
5. Recycle all the disassembled parts following your local regulation

## Assembling the upgrade kit

1. Mount the aluminum adapter plate delivered with the kit on the rear side of the speed ring by screwing the 2 hexagon sunk screws. Tighten firmly the 2 screws by means of the key Nr. 5



2. Mount the black tilt bracket assembly delivered with the kit on the adapter plate, be sure the sloping edge is mounted toward the orientation handle (upside mounted on the stand)  
Fix it by screwing the 4 silver like screws by means of the screwdriver; tighten the 4 screws.



The upgrade is completed.

## Check the tilt bracket function

1. Mount the Indirect Soft box on a stand. Tighten firmly the wing screw on the pole
2. Fix a Compact device on the bayonet (worst case is the heaviest Style 1200RX)
3. Put the device horizontally and tighten the bracket handle, the device remains horizontal without sinking.

Contact Elinchrom support [SAV@elinchrom.ch](mailto:SAV@elinchrom.ch) if you need extra support.