

Confidentiality level class 2:

This document intended for a restricted public only (Official Elinchrom agents, partners, suppliers, manufacturers or outsourcers). Any third party dissemination, distribution, copying or use of these documents, without prior permission, is strictly prohibited.

Technical Problem

We have found out that in some rare cases of the first production batch from serial number S2182093000001 to S2182093002000, the Elinchrom ONE may suffer an early life failure with a broken diode D43 on the Powerboard 291.012.

It usually happens after some flashes with the brand new unit. When it happens, the unit will not flash anymore. The white LED ring around the knob will blink randomly.

The solution is to replace the defective diode D43 with another enforced Schottky barrier diode 1N5819HW-7-F with item number **105.012**

Repairing Procedure



The interior of the Elinchrom ONE unit contains components carrying dangerous levels of electric charge, even though the unit has been disconnected from the mains or without supply battery. **Before all servicing operations or repairs, you must execute the following Discharge Process**

1. Remove USB-C cable
2. Power Off the unit



3. Carefully remove the Product Label by the corner. (Img. 3) Try to keep the product label for the reassembling. If the label is damaged during this operation, replace it by a new label 301.376



Img. 3

Confidentiality level class 2:

This document intended for a restricted public only (Official Elinchrom agents, partners, suppliers, manufacturers or outsourcers). Any third party dissemination, distribution, copying or use of these documents, without prior permission, is strictly prohibited.

- 4. Carefully remove the Rubber Pad. (Img. 4)** Try to keep the rubber pad for the reassembling, if the pad is damaged or loose the adhesive layer during this operation, replace it by a new rubber pad 291.009



Img. 4



Use insulated gloves from now until the end of this Discharge Process

- 5. Opening the housing left side**
- Remove the 4 screws on the Housing Left (Img. 5a)
 - Remove the 4 screws of the Glass Dome (Img. 5b) and remove the Flashtube with the Trigger Fork



Img. 5a

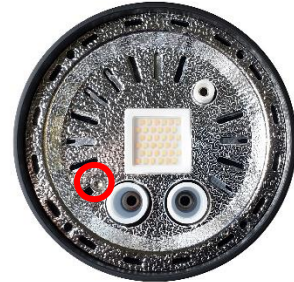
Confidentiality level class 2:

This document intended for a restricted public only (Official Elinchrom agents, partners, suppliers, manufacturers or outsourcers). Any third party dissemination, distribution, copying or use of these documents, without prior permission, is strictly prohibited.

- c) Remove the screw on the Inner Dish (*Img. 5c*)
- d) Remove the 6 screws of the Front Ring (*Img. 5d*)
- e) Remove the Front Ring and the LED Silicon Ring (*Img. 5e*)
- f) Open the housing by pulling the left housing side. (*Img. 5f*)



Img. 5b



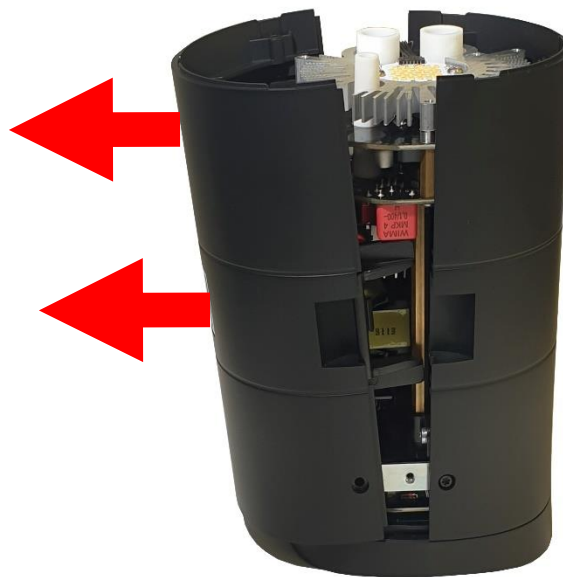
Img. 5c



Img. 5d



Img. 5e



Img. 5f



- 6. Disconnect the internal battery connector (*Img. 6*)**



Img. 6

Confidentiality level class 2:

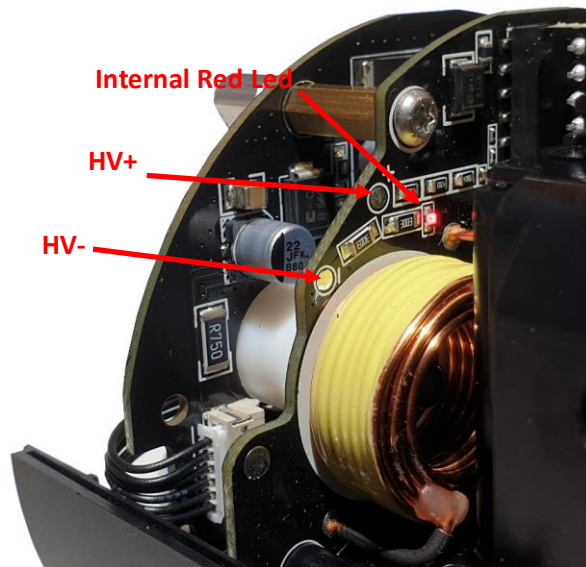
This document intended for a restricted public only (Official Elinchrom agents, partners, suppliers, manufacturers or outsourcers). Any third party dissemination, distribution, copying or use of these documents, without prior permission, is strictly prohibited.



7. Discharging

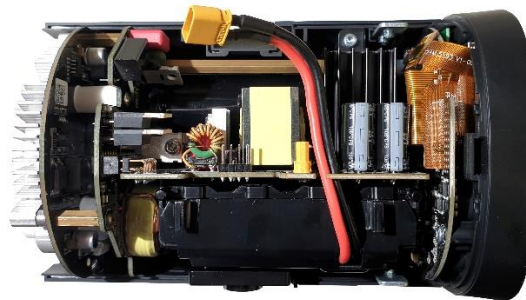
On the Flash board, check that the voltage between HV+ and HV- (Img. 7) is lower than 50VDC, if higher use a Security box (110.305 or 110.310) to discharge the HV voltage below 50 VDC.

Note that the internal red led on the Flash Board will shutt down when the HV voltage is safe for servicing.



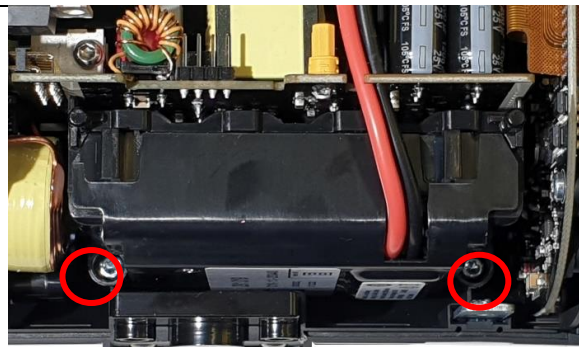
Img. 7

8. Remove the Elinchrom ONE Logo Board 291.013 (Img. 8)



Img. 8

9. Remove the 2 screws on the Battery housing (Img. 9) and remove the battery



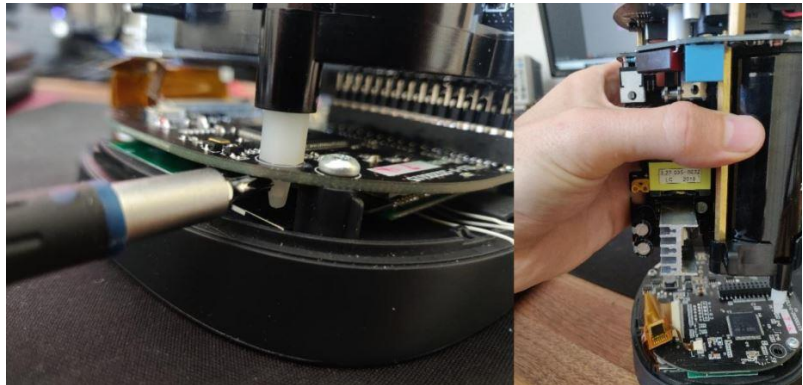
Img. 9

10. Remove all other housing screws and remove the housing right side

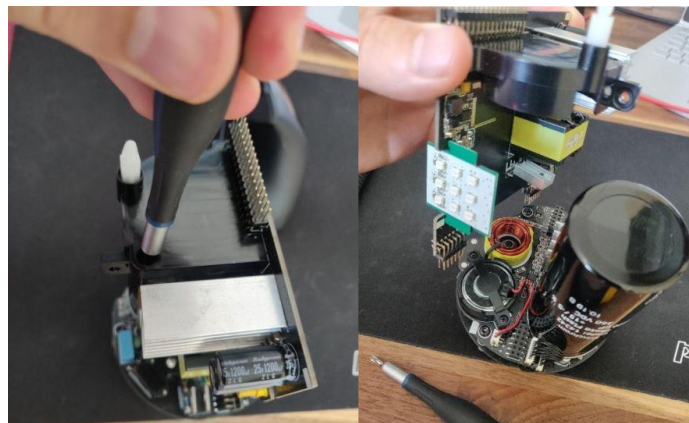
Confidentiality level class 2:

This document intended for a restricted public only (Official Elinchrom agents, partners, suppliers, manufacturers or outsourcers). Any third party dissemination, distribution, copying or use of these documents, without prior permission, is strictly prohibited.

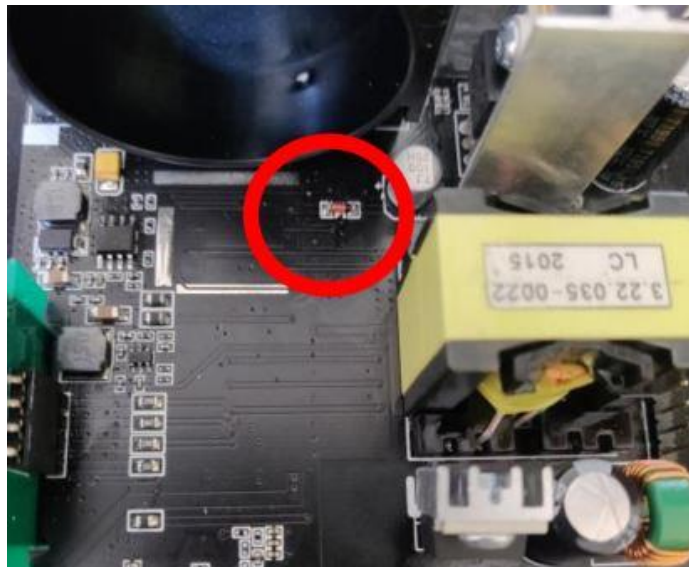
- 11. Unlock the white locking pin from the control board and then separate the front panel from the rest of the boards.**



- 12. On the power block, remove the capacitor board screw and then separate the capacitor board from the power board**



- 13. The defective diode to replace is on the Power board as shown**



Confidentiality level class 2:

This document intended for a restricted public only (Official Elinchrom agents, partners, suppliers, manufacturers or outsourcers). Any third party dissemination, distribution, copying or use of these documents, without prior permission, is strictly prohibited.

14. Change the defective diode D43

Unsolder the defective diode and solder the new diode.

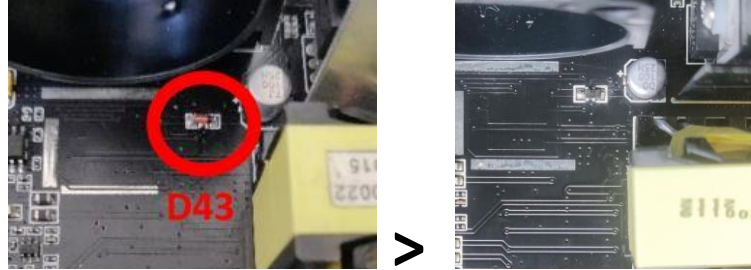
The part number of the new one is:

105.012

Reference : 1N5819HW-7-F



Replace the actual D43 by the new 105.012 diode, taking care of the polarization. The cathode must be in the same direction.

**15. Assembly the unit**