

Confidentiality level class 2:

This document intended for a restricted public only (Official Elinchrom agents, partners, suppliers, manufacturers or outsourcers). Any third party dissemination, distribution, copying or use of these documents, without prior permission, is strictly prohibited.

EL-Skyport Pro

Service Manual



EL-Skyport Transmitter Pro for Canon (19366)

EL-Skyport Transmitter Pro for Nikon (19367)

EL-Skyport Transmitter Pro for Sony (19371)

EL-Skyport Transmitter Pro for Fuji (19337)

EL-Skyport Transmitter Pro for Olympus (19372)

EL-Skyport Transmitter Pro for Pentax (19336)



Confidentiality level class 2:

This document intended for a restricted public only (Official Elinchrom agents, partners, suppliers, manufacturers or outsourcers). Any third party dissemination, distribution, copying or use of these documents, without prior permission, is strictly prohibited.

Table of content

| | |
|------------------------------|----------|
| 1. SPARE PARTS | 3 |
| 2. OPENING THE DEVICE | 3 |
| 3. FIRMWARE | 5 |
| 3.1. Release | 5 |
| 3.2. Update | 5 |
| 4. REPAIR ASSISTANCE | 6 |
| 4.1. Failures management | 6 |
| 5. KNOWN PROBLEMS | 6 |

Confidentiality level class 2:

This document intended for a restricted public only (Official Elinchrom agents, partners, suppliers, manufacturers or outsourcers). Any third party dissemination, distribution, copying or use of these documents, without prior permission, is strictly prohibited.

1. SPARE PARTS


All available spare parts are displayed in the Elinchrom Web Shop in our Distributors Center www.elinchrom.com/agent

Category : Spare Parts > EL-Skyport

All available and no longer available spare parts are displayed in the “Spare Parts List” of the Technical Center in our Distributors Center www.elinchrom.com/agent

2. OPENING THE DEVICE

Follow this process below to open the EL-Skyport transmitter Pro without broken the internal wire connection (hot-shoe) and take care about the ESD (Electro Static Discharge).

|  ATTENTION OBSERVE PRECAUTIONS FOR HANDLING ELECTROSTATIC SENSITIVE DEVICES | <h3>Opening device Process</h3> <p>During all the process, you have to observe ESD precautions.</p> |  ATTENTION OBSERVE PRECAUTIONS FOR HANDLING ELECTROSTATIC SENSITIVE DEVICES |
|--|---|--|
| <p>1. Remove the AA batteries</p> |  | |
| <p>2. Remove the two housing screws</p> |  | |

Confidentiality level class 2:

This document intended for a restricted public only (Official Elinchrom agents, partners, suppliers, manufacturers or outsourcers). Any third party dissemination, distribution, copying or use of these documents, without prior permission, is strictly prohibited.

3. Open the housing (see movement on picture A), but **take care to not spread the housing sides to much**. As you can see on the pictures B) there is two wires connections between the hot shoe and the boards. **The risk is to broken these wires**

A)



B)

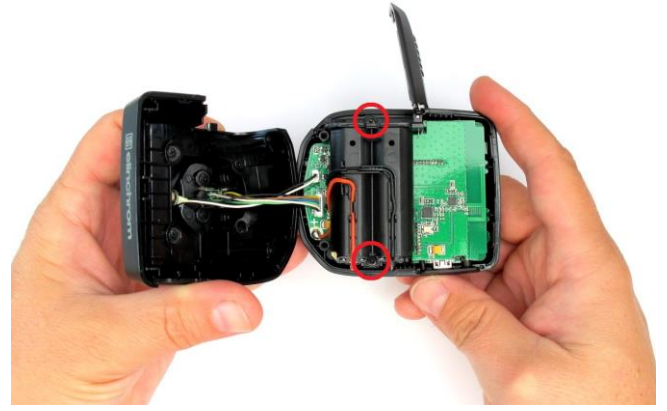


Confidentiality level class 2:

This document intended for a restricted public only (Official Elinchrom agents, partners, suppliers, manufacturers or outsourcers). Any third party dissemination, distribution, copying or use of these documents, without prior permission, is strictly prohibited.

Optional :

4. If you want to replace the Battery Door 250.031, you have to remove also the two screws of the battery case.



3. FIRMWARE

3.1. Release

EL-Skyport Transmitter Pro firmware version is displayed during the power on.



3.2. Update

ELB 1200 firmware update could be done with the software Elinchrom Updater and a micro USB cable.

Activate the firmware update mode

- a) Battery AA must be correctly inserted in the EL-Skyport Transmitter Pro
- b) Have the EL-Skyport Transmitter Pro OFF
- c) Connect EL-Skyport Transmitter Pro to your computer with the Mini-USB cable



Confidentiality level class 2:

This document intended for a restricted public only (Official Elinchrom agents, partners, suppliers, manufacturers or outsourcers). Any third party dissemination, distribution, copying or use of these documents, without prior permission, is strictly prohibited.

Start the Elinchrom Updater software.
Follow the instructions of the Elinchrom Updater software.



4. REPAIR ASSISTANCE

4.1. Failures management

| Failure Description | Solution for Service |
|------------------------------------|--|
| Skyport communication disturbances | Replace the whole EL-Skyport Transmitter Pro |
| Display problem | Replace the whole EL-Skyport Transmitter Pro |
| Keyboard touch defective | Replace the whole EL-Skyport Transmitter Pro |

5. KNOWN PROBLEMS

All known problems have a corresponding Technical Note available in the online **Technical Centre**.